

L I M I T E D T E N D E R
N O T I C E

Tender Ref. No.

Date

Tender Due Date

GFD-15/11/2021-EPD-SMR_CHE-SMR CHE DEPTT -12655

09-12-2021

24-12-2021

To

Dear Sir,

The Purchase Officer, SAMEER-Centre for Electromagnetics invites sealed tender for the supply of materials / Services as per details given below:

Sl. No	Description of Items	Qty (Nos.)
1.	Concrete platform work at EDC, Perugudi, Chennai 600 096 (As per drawing and Schedule of Quantity Attached)	1

Terms and Conditions:

1. Tenders to be submitted to The Purchase Officer ,SAMEER-CEM ,CIT Campus, 2nd Cross Road, Taramani, Chennai 600 113.
2. Delivery / Completion period should be clearly indicated.
3. Excise Duty, GST Percentage should be clearly indicated if admissible. Not eligible for FORM 'C' /'D'
4. WE ARE EXEMPTED FROM EXCISE DUTY
5. Quotation should be valid for atleast 60 days from the date of opening of the tender
6. Quotation should be sent in sealed envelope super scribing the tender reference number and tender due date. E-mail quotation will not be accepted. YOUR OFFER WILL NOT BE CONSIDERED IF OUR TENDER REFERENCE NO. & TENDER DUE DATE IS NOT MENTIONED ON COVER.
7. Late tenders will not be accepted under any circumstances
8. We reserve the right to accept or reject any quotations fully or partly without assigning any reasons.
9. For Further Clarification Please Contact 044-22544061 / 22544020 Email: purchase.chn.sameer@nic.in
10. Unsolicited bids shall not be considered

P. Ramamoorthi
09/12/2021

(P. Ramamoorthi)
Head – Administration

Contd.,



CIT Campus, 2nd Cross Road, Taramani, Chennai - 600 113, India

सी.आई.टी. परिसर, दूसरा क्रॉस रोड, तारामणी चेन्नै - ६०० ११३.

दूरभाषिन : Tel : +91-44-22541583 / 1817 / 2106 / 2452 फैक्स / Fax : 2254 1938 / 1424

वेबसाइट : www.sameer.org.in

NAME OF WORK: Concrete platform work at EDC, Perungudi, Chennai 600 096.

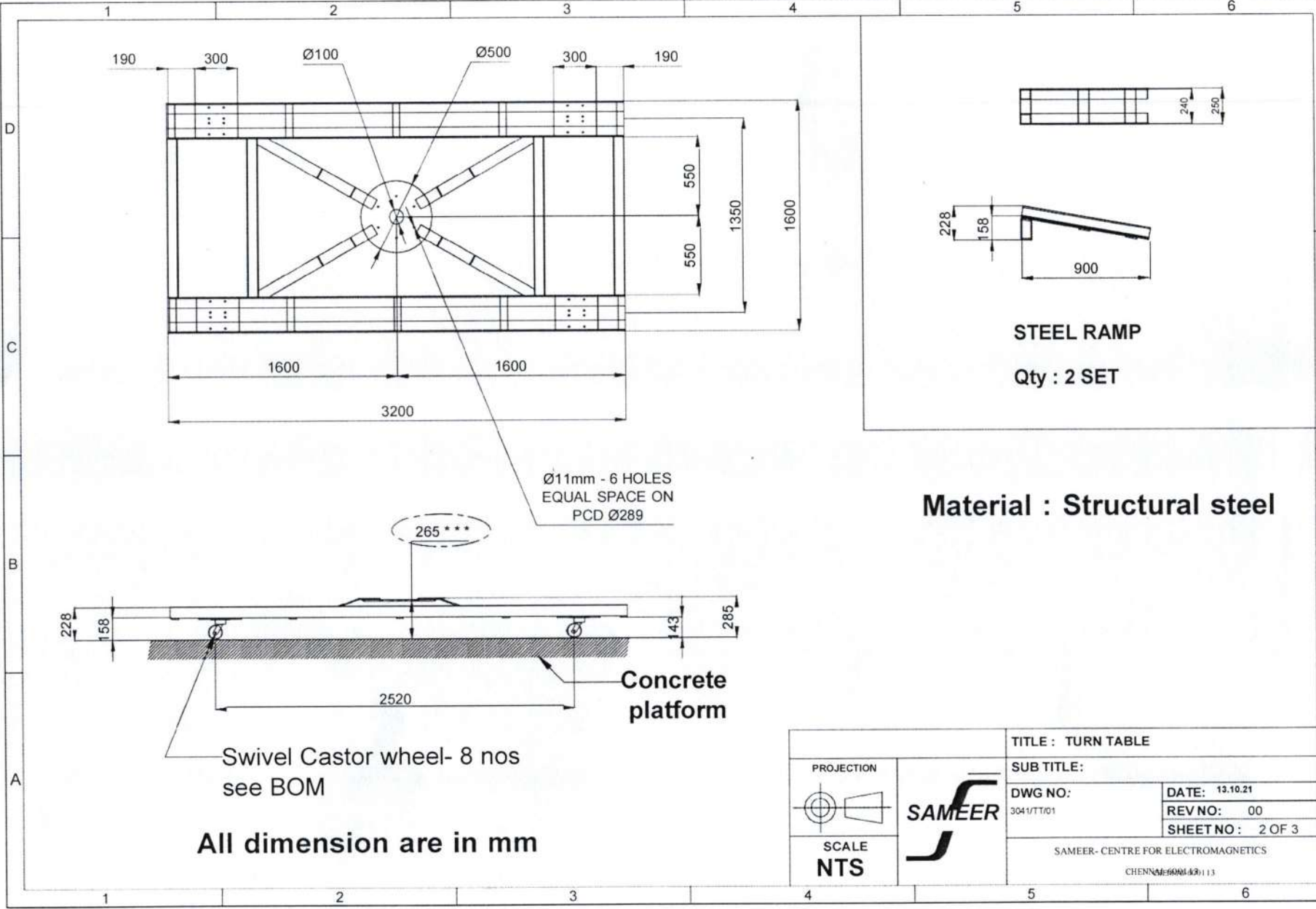
SCHEDULE OF QUANTITIES

SI.No	Description of item	Qty	Unit
(1)	Existing road area cleaning , providing and construction retaining wall in 115 mm thick brick wall all-round in CM1:4 including all materials and labors, finishing etc complete all as per the direction and instruction of Engineer In Charge.	2	SqM
(2)	Existing road area clearing, providing and laying of reinforced cement concrete of 1:2:4 using 25mm maximum size graded aggregate including ramming, compaction, leveling, curing, for platform and entrance ramp including necessary form works etc complete including all materials and labor all as per the direction and instruction of engineer In Charge.	4	Cum
(3)	Cutting, bending, placing and binding steel reinforcement for ramp works including providing spacer block, blinding wires, complete all as per the direction and instruction of Engineer In Charge.	900	Kg
(4)	Providing , fabricating , installing, placing and securing in positions in concrete MS steel/embedment's /pipe sleeves/ penetration comprising of MS angles, plates, chequered plates tees, flats, rounds, squares and other structural steel sections, pipe sleeves and pipes of various sizes including cutting, welding, bending to shapes, painting with two coats of paint over a coat of primer compete etc complete all as per the direction and instruction of Engineer In Charge.	270	Kg
(5)	Providing and laying of 3" heavy quality PVC pipe in concrete flooring with necessary fittings etc complete all as per the direction and instruction of Engineer In Charge.	4	M
(6)	Providing and fixing of castor wheel of approved brand etc complete all as per the direction and instruction of Engineer In Charge.	8	Each

NAME OF WORK: Concrete platform work at EDC, Perugudi, Chennai 600 096

DETAILED ESTIMATE

Sl. No	Description	No	Length (M)	Breadth (M)	Depth (M)	Area/ Vol M ² /M ³
1.	Existing road area clearing, providing and construction retaining wall in 115 mm thick etc	1	17.60	-	0.10	1.76
				TOTAL		1.76 or say 2.00
2.	Existing road area clearing, providing and laying of reinforced cement concrete of 1:2:4 using 25mm maximum size graded aggregate including etc	1	6.20	6.20	0.10	3.84
				TOTAL		3.84 or say 4.00
3.	Cutting, bending, placing and binding steel reinforcement for ramp works including providing spacer block, binding wires, complete all as per the direction and instruction of Engineer In Charge.	1	5.60	5.60	26.90 Kg/sqm	844
				TOTAL		844 or say 900
4.	Providing, fabricating, installing, placing and securing in positions in concrete MS steel/ embedment's /pipe sleeves/ /penetration comprising of MS angles, plates ,chequered etc	1	270	-	Kg	270
5.	Providing and laying of 3"heavy quality PVC pipe in concrete flooring with necessary fittings etc complete all as per the direction and instruction of Engineer In Charge	1	4.00	-	-	4
6.	Providing and fixing of castor wheel of approved brand etc complete all as per the direction and instruction of Engineer In Charge	1	8	-	-	8



STEEL RAMP

Qty : 2 SET

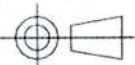

Material : Structural steel

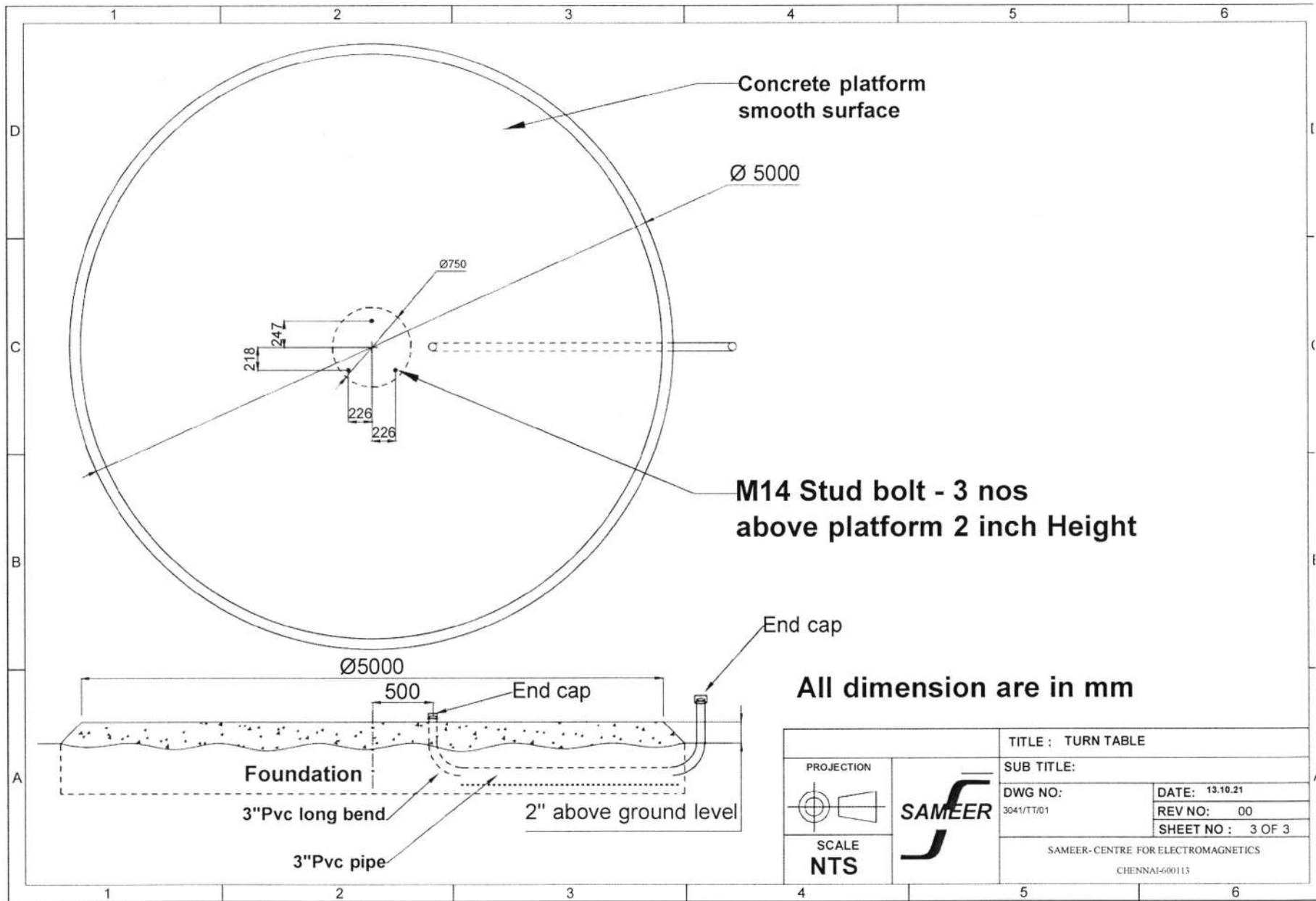
Ø11mm - 6 HOLES
EQUAL SPACE ON
PCD Ø289

Concrete platform

Swivel Castor wheel- 8 nos
see BOM

All dimension are in mm

PROJECTION		TITLE : TURN TABLE	
SCALE NTS		SUB TITLE:	
		DWG NO: 3041/TT/01	DATE: 13.10.21
			REV NO: 00
		SHEET NO: 2 OF 3	
SAMEER- CENTRE FOR ELECTROMAGNETICS			
CHENNAI-600113			



Concrete platform
smooth surface

Ø 5000

Ø750

218

247

226

226

M14 Stud bolt - 3 nos
above platform 2 inch Height

End cap

Ø5000

500

End cap

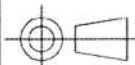

Foundation

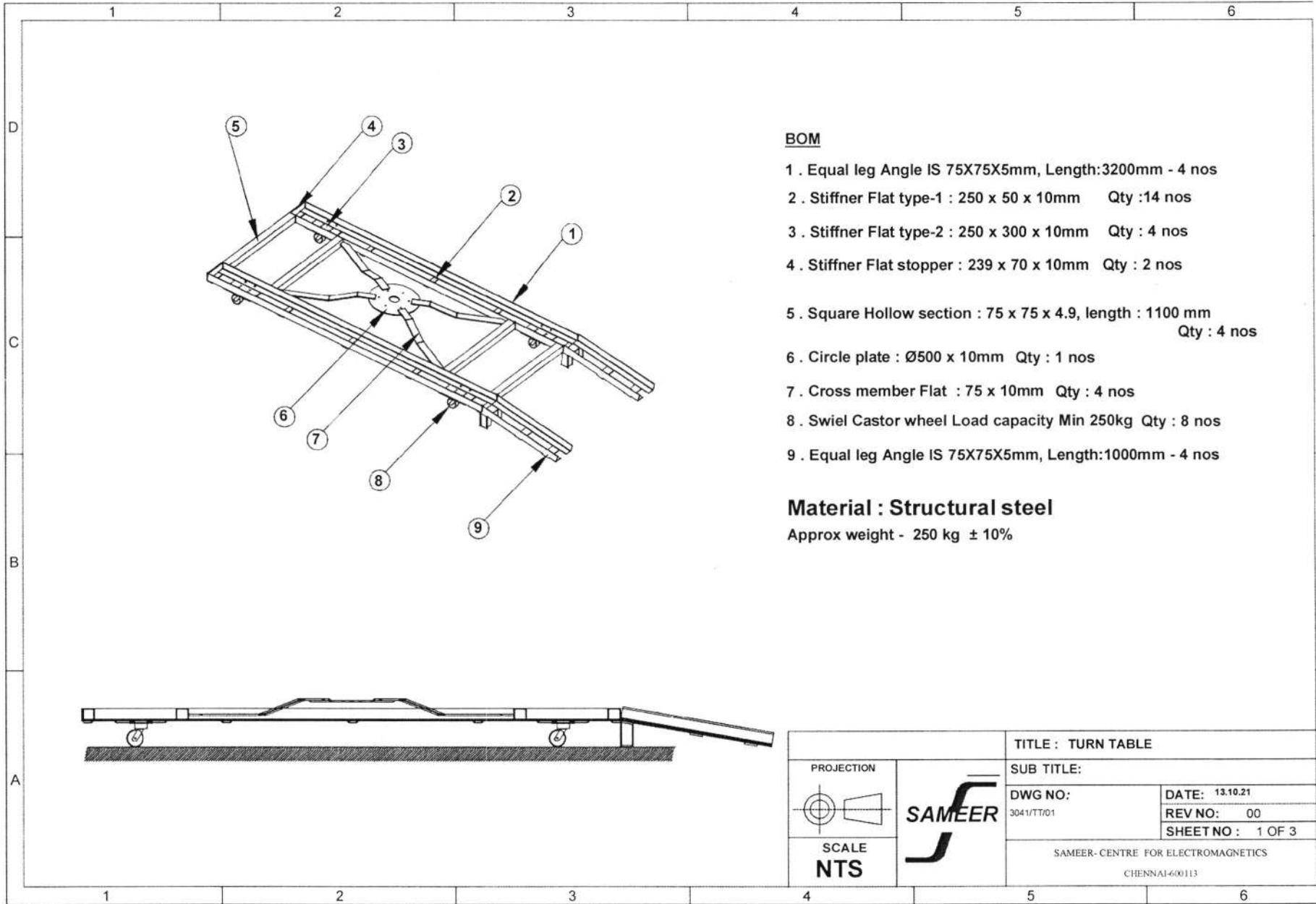
3\"Pvc long bend

3\"Pvc pipe

2\" above ground level

All dimension are in mm

PROJECTION		TITLE : TURN TABLE	
		SUB TITLE:	
		DWG NO: 3041/TT/01	DATE: 13.10.21
SCALE NTS		REV NO: 00	
		SHEET NO : 3 OF 3	
		SAMEER-CENTRE FOR ELECTROMAGNETICS CHENNAI-600113	



BOM

- 1 . Equal leg Angle IS 75X75X5mm, Length:3200mm - 4 nos
- 2 . Stiffner Flat type-1 : 250 x 50 x 10mm Qty :14 nos
- 3 . Stiffner Flat type-2 : 250 x 300 x 10mm Qty : 4 nos
- 4 . Stiffner Flat stopper : 239 x 70 x 10mm Qty : 2 nos
- 5 . Square Hollow section : 75 x 75 x 4.9, length : 1100 mm Qty : 4 nos
- 6 . Circle plate : Ø500 x 10mm Qty : 1 nos
- 7 . Cross member Flat : 75 x 10mm Qty : 4 nos
- 8 . Swiel Castor wheel Load capacity Min 250kg Qty : 8 nos
- 9 . Equal leg Angle IS 75X75X5mm, Length:1000mm - 4 nos

Material : Structural steel

Approx weight - 250 kg ± 10%

		TITLE : TURN TABLE	
		SUB TITLE:	
		DWG NO: 3041/TT/01	DATE: 13.10.21
			REV NO: 00
		SHEET NO: 1 OF 3	
SAMEER- CENTRE FOR ELECTROMAGNETICS CHENNAI-600113			